

ABB Robot Welder - 95 St Ouen l'Aumône



MOTOMAN Robot Welder 44 St-Aignan-de-Grand-Lieu

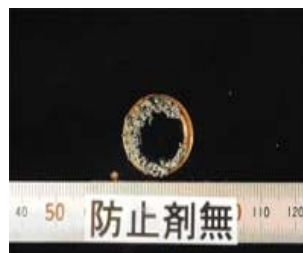
# Swing Arm For Robotics

Due to increasing market demand, Spatter Shield™ has developed a “Swing Arm” that will maximize the potential gains from the Spatter Shield™ Unit.

The “Swing Arm” was developed to ensure that the unit remains in a horizontal position as much as possible to ensure constant mist concentration levels.

Additionally it alleviates the restriction on small or high-speed robots on fitting locations, which is recommended on most outer cell walls. This gives flexibility to installation locations as well as maximizing the Spatter Shield™ unit potential.

The Spatter Shield™ market research team combined with its design engineers will continue to increase the useability of our product range.



Build up of spatter when Spatter Shield™ is not used.



Spatter adhesion is almost none existent when Spatter Shield™ is used.

